



635-AMM Installation QRG (Input Module)

CONTENTS	
1.0 Install 635-DSI on the I2C Data Bus	1
2.0 Install 635-AMM (Input Module) on RS485 Section	2

1.0 Installing a 635-DSI Board on the I2C Data Bus

This section describes installing a 635-DSI Board on the I2C Data Bus (ribbon cable) to support AMMs on RS485 Section.

⚠ DO NOT INTERRUPT FLASHING. Do not interrupt the power source, I2C Bus, or SW1 Reset on the CPU or DRM board during flashing process. Interrupting flash will damage board memory and require factory repair.

1. System Galaxy Software SG 10.4 (or higher) required. All existing & new panels must be flashed to current flash.
2. 635-CPU supports 635-DSI with 635-AMM Input Module on the RS485 Section (i.e. not supported on a 600 CPU).
3. 635-Input Module supports 16 Inputs per board (256 inputs per DSI RS485 Section).
4. 635-DSI Board supports up to 16 Input Modules per RS485 Section: for up to 4000 ft. total line distance.

NOTE: a 635-CPU supports up to 64 devices per CPU Board. Each 635-AMM Board counts as 1 device (DSI Board not counted).

5. SET THE DSI BOARD ID using dipswitch pos. 4 thru 8. (factory default 16 = only position 4 ON)
 - a) Turn OFF/DOWN all Switch Positions 4 thru 8.
 - b) Then only turn ON/UP the DIP Switch positions that are needed to set the desired Board ID – use table below.
 - The Board ID must be unique on the I2C data bus (ribbon cable), and Valid IDs are 1 thru 16.

TABLE FOR SETTING BINARY DIPSWITCH (BOARD NUMBERS)

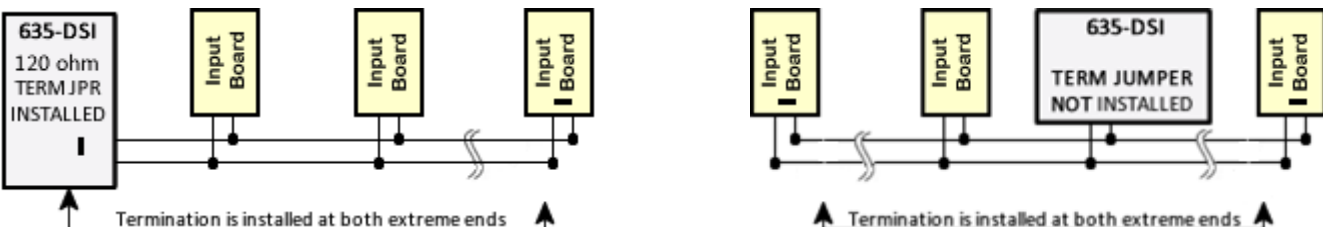
ID	Actual DIP Switch Position	ID	Actual DIP Switch Position
1	8 = ON	9	5, 8 = ON
2	7 = ON	10	5, 7 = ON
3	7, 8 = ON	11	5, 7, 8 = ON
4	6 = ON	12	5, 6 = ON
5	6, 8 = ON	13	5, 6, 8 = ON
6	6, 7 = ON	14	5, 6, 7 = ON
7	6, 7, 8 = ON	15	5, 6, 7, 8 = ON
8	5 = ON	16	4 = ON (factory default)

- OPTION-C (Switch pos. 3) is OFF (19200 bps).
- OPTION-B (Switch pos. 2) is unused.
- OPTION-A (Switch pos. 1) is unused

6. Correctly set the 120-ohm Termination Jumper on each RS485 Section (JP4/JP5) of the DSI Board.
NOTE: Consider the RS485 Sections separately when setting the termination jumpers. The RS485 Sections function independently; thus, one section of the DSI might be at the *end-of-line*, while the other section is not.

Diag. A. DSI Jumper shown in the TERM position when DSI Board is located at the end of a RS485 wire-run.
Diag. B. DSI Jumper shown OPEN (NOT INSTALLED) when the DSI is NOT at the end-of-line (120 Ω jumpers is installed only on the Input board at the 'extreme end' of the line).

Diagram A: 120 Ω term jumper installed on DSI. **Diagram B:** 120 Ω term jumper not installed on DSI.



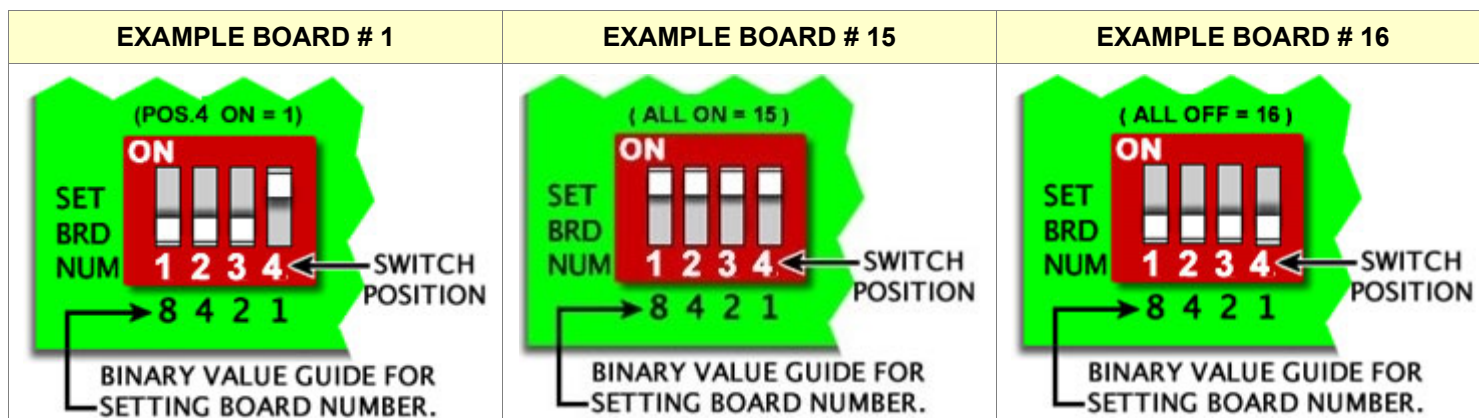
Use the BLACK 2-PIN JUMPERS (included with Boards) Installed ONLY at the end of the RS-485 wire-runs.

7. **Install the DSI Board into the controller cabinet and connect to the I2C Bus (ribbon cable) and power harness.** The DSI must be communicating on the I2C bus before connecting the DRMs. Verify DSI communication by entering the CPU's IP Address into a Web Browser* to confirm the connection status of the DSI Board. (*PC and CPU must be on same network segment. Board appears on **Panel Status page**. Board Status should = Normal. When using the Web Config Page diagnostics, you should uncheck/update the server 1 connection) Alternately, a DSI connection can be confirmed by retrieving/saving in the Controller Programming screen via the SG software.)

8. Before installing a 635-Model Input Board, you must configure the SWITCHES and JUMPERS:

a) BOARD DIPSWITCH SETTINGS:

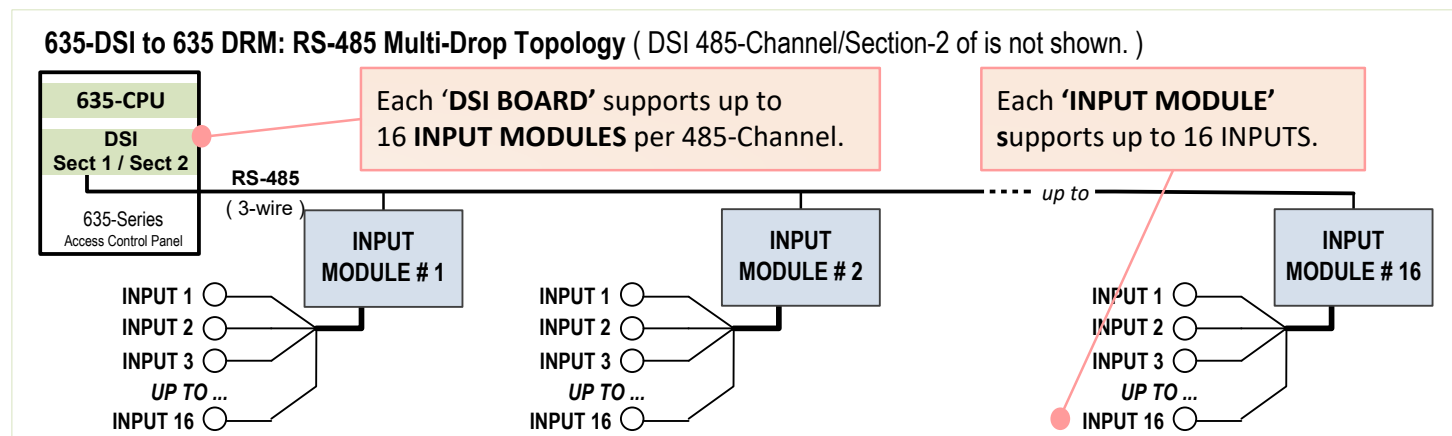
SET Board ID (positions 1 thru 4). Valid ID is 1 thru 16; each Board must have a unique ID on RS485 bus.



b) The Binary ID Table (BELOW) shows the DIP-Switch Positions (not *Binary Value* markings);

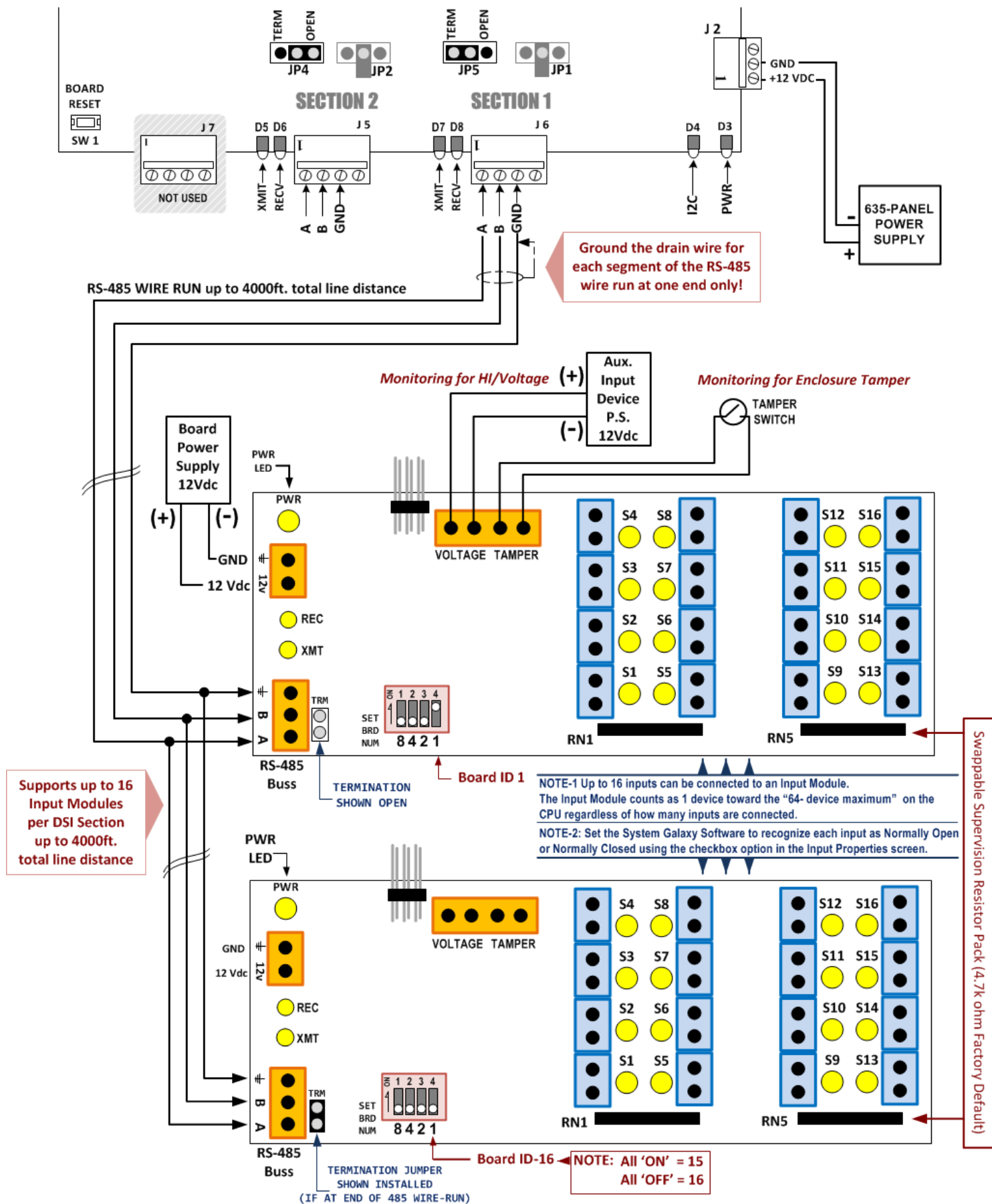
AMM ID	Actual DIP-Switch Position	AMM ID	Actual DIP-Switch Position
1	4 = ON	9	1, 4 = ON
2	3 = ON	10	1, 3 = ON
3	3, 4 = ON	11	1, 3, 4 = ON
4	2 = ON	12	1, 2 = ON
5	2, 4 = ON	13	1, 2, 4 = ON
6	2, 3 = ON	14	1, 2, 3, = ON
7	2, 3, 4 = ON	15	ALL ON = 15
8	1 = ON	16	ALL OFF = 16

c) Diagram of 635-DSI RS485 Section-1: showing Input Module *Board IDs* and *Input Numbering*



9. **REMEMBER** properly set the termination Jumper on the Input Board; **INSTALL ONLY** if board is at the end of line

10. RS485 NETWORK WIRING: Land the 3-Wire Cable from DSI Board RS485 Section → 635-AMM Input Boards.



11. INSTALLER CAN VIEW AND TEST INPUTS from the embedded web page as follows:

- Enter the **panel's IP Address** into a *web browser* to find the *Panel Status page*. (the PC/browser must be able to reach the same network segment that the panel is in).
- In the '**Attached Boards**' table, click on the **Serial#** of the **DSI Board** that is connected to the Input Modules
RESULT: This will open the *DSI Testing page* (see below).

Attached Boards						
Serial#	Board#	Status	Board Type	Version	Using CPU	Flash Update
3400004	4	NORMAL	635-DSI	5.05	1	n/a
3000001	1	NORMAL	635-DPI	5.05	1	n/a

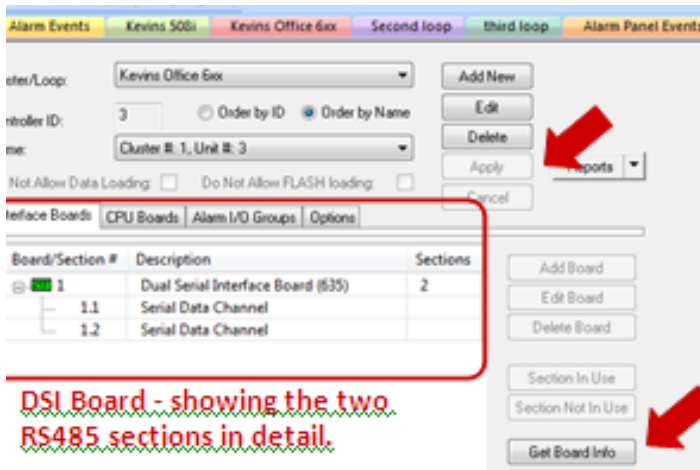
- In the *DSI Test Screen* (below), choose the **Section# (one or two)** that the *Input Modules* are connected to.
- In the [Function] list choose 'Galaxy Input Modules'.
- Click the [APPLY] button to retrieve the states of the individual inputs.
RESULT: The Found column will display "yes" for each AMM Board that is physically connected and powered ON.
All **AMM Modules** that are connected to the chosen **DSI RS485 Section** will display a color-coded block that represents the state of the individual input. Inputs 1 - 16, Voltage (Vt), Tamper (Ta) are shown.
 - GREEN** = Short Circuit
 - RED** = Open Circuit
 - YELLOW** = 1 Resistor detected (for inputs 1 thru 16)
 - ORANGE** = 2 Resistors detected (for inputs 1 thru 16)
 - WHITE** = No module or inputs detected for that Board ID.

Configuration Options				Selection Testing			
Local Date/Time:	09:16:19 05/22/2014			Section	Two		
Serial Number:	3400004			Function	Galaxy Input Modules		
Software Version:	5.05			Apply			

DSI Section 2 setup for Galaxy Input Modules																			
Legend: short circuit 1 resistor 2 resistors open circuit																			
iMod	Found	S1	S2	S3	S4	S5	S6	S7	S8	S9	10	11	12	13	14	15	16	Vt	Ta
1	yes	Green	Green	Green	Green	Green	Green	Green	Green	Green	Green	Green	Green	Green	Green	Green	Green	Green	Green
2	yes	Red	Red	Red	Red	Red	Red	Red	Red	Red	Red	Red	Red	Red	Red	Red	Red	Red	Red
3	yes	Red	Red	Red	Red	Red	Red	Red	Red	Red	Red	Red	Red	Red	Red	Red	Red	Red	Red
4	yes	Red	Red	Red	Red	Red	Red	Red	Red	Red	Red	Red	Red	Red	Red	Red	Red	Red	Red
5	yes	Red	Red	Red	Red	Red	Red	Red	Red	Red	Red	Red	Red	Red	Red	Red	Red	Red	Red
6	yes	Red	Red	Red	Red	Red	Red	Red	Red	Red	Red	Red	Red	Red	Red	Red	Red	Red	Red
7	yes	Red	Red	Red	Red	Red	Red	Red	Red	Red	Red	Red	Red	Red	Red	Red	Red	Red	Red
8	yes	Red	Red	Red	Red	Red	Red	Red	Red	Red	Red	Red	Red	Red	Red	Red	Red	Red	Red
iMod	Found	S1	S2	S3	S4	S5	S6	S7	S8	S9	10	11	12	13	14	15	16	Vt	Ta

12. In the System Galaxy Software, you must program the Loop/Cluster, Controller, and DSI Board.

- ▶ In the *Controller Properties* screen, click **[Edit]** then click **[Get Board Info]**. The boards that are attached to that CPU will be retrieved and can be saved.
- ▶ NOTE: The CPU must be powered ON and connected to the LAN and the CPUs configured with IP Addresses and the Boards installed and connected to the I2C ribbon cable. The GCS services must be running/connected.
- ▶ Set unused board sections to **[NOT IN USE]**.
- ▶ Remember to click **APPLY** to save settings.



13. Select **Configure > Hardware > Serial Channels** from the SG menu to configure the DSI boards.

- ▶ Set the **Channel Mode** field to "RS485 Input Module".
- ▶ "check" only the Input Board numbers you installed.
- ▶ Remember to click **APPLY** to save settings.

Cluster: 001, Cont: 001, Brd: 1, Sect: 1

Description: Serial Channel Cluster: 001, Cont: 001, Brd: 1, Sect: 1

Channel Mode: RS-485 Input Module(s)

Module #	Name
<input checked="" type="checkbox"/> 1	Cluster: 001, Cont: 001, Brd: 1, Sect: 1, Module: 1
<input checked="" type="checkbox"/> 2	Cluster: 001, Cont: 001, Brd: 1, Sect: 1, Module: 2
<input checked="" type="checkbox"/> 3	Cluster: 001, Cont: 001, Brd: 1, Sect: 1, Module: 3

14. Select **Configure > Hardware > Inputs** from the SG menu to configure the individual Inputs.

- ▶ Select the correct Loop and Controller, and the Input from the [Input Name] list.
- ▶ Click **EDIT** button. **You may change the Input Name to a logical name** (the physical coordinates of will continue to display above the name field for reference (cluster, unit, DSI board, section, input module ID and input position number).
- ▶ **You must set the Mode for the input.**
- ▶ **Set the ARM Schedule as appropriate.**
- ▶ **You must check the [IN USE] option.**
- ▶ You can also check the **[Show in Tree]** option to display inputs in the SG Hardware Tree.
- ▶ In the **Link to I/O Groups** tab (not shown), configure the input as desired (*you must have already created any custom I/O Group name if needed*).

NOTE: See Chapter 9 of **Software User Guide** for more Input Programming steps – avail. thru Software Help Menu.

15. **You must set the [Normally Open Contact] option** to match the type of device that is wired to the input (i.e. check if device is N.O. contact; uncheck if device is N.C.). Found on the **Supervision Settings** tab (shown below).

16. (OPTIONAL) **Configure Input Supervision if used.**
NOTE: A 4.7k ohm resistor pack is installed as factory default for inputs 1 thru 16; this can be changed.

NOTE: (J3) aux voltage & cabinet tamper inputs are also configured from this screen (supervision does not apply).

Loop: Kevins Office 60x

Control Unit: All Controllers

Post Type: Dual Serial Interface Board (600)

Cluster: 001, Cont: 001, B: 1, S: 1, I: 01

Input Name: C:U:B:S 001:001:1:1, Module:1 Inp: 01

ARM Schedule: ** NEVER **

Mode: Normal Input

Show In Tree:

In Use:

Link to I/O Groups | Options | CCTV Events | Graphic Symbols | DVR Camera Settings | Supervision Settings

Select Supervision Type:

No Supervision Resistor

Normally Open Contact

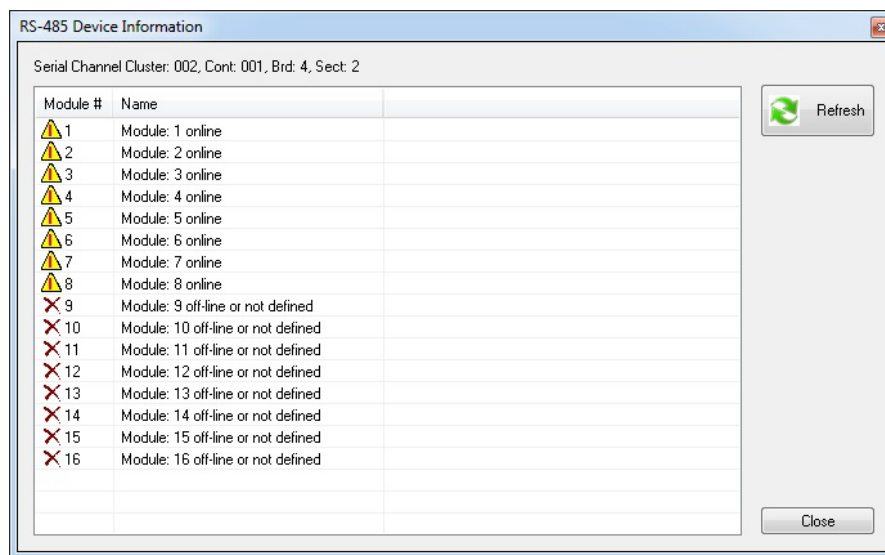
IN-LINE (SERIES) RESISTOR
EOL (PARALLEL) RESISTOR
IN-LINE & EOL (SERIES/PARALLEL) RESISTOR

[Optional software settings for on-board resistor pack]

17. **IMPORTANT:** You must launch *GCS Loader Utility* and load data to the panel. You can open the Loader from the by right-clicking the appropriate Loop Name in the Hardware Tree, then choosing the 'Load' option from the menu.
- When the **initial Data Load** is completed, the system will calibrate the inputs.
 - Future updates to the Input programming should be sent to the panel when you click [Apply] in the programming screen. However, you are in doubt, or the panel doesn't seem to pick up the change, you can always manually perform a data load to be sure that your inputs are correctly calibrated.
 - In the GCS Loader's Data tab, you should check all available loader options, because some programming is interdependent on other components such as schedules. To speed up the loading process, you can safely uncheck or omit loading 'all cards' if you know the user cardholder database is large and you know you do not have card changes – or load all cards on a separate pass after you finish loading the system programming.

18. You can also verify the input device status on the RS485 Input Modules from the Controller Properties screen. ([Configure > Hardware > 635 Controller](#))

- In the *Controller Properties* screen, expand the DSI Board and select the appropriate Section number (not pictured).
- Click the [RS-485 Device Info] button to retrieve a list of all the Input Modules connected to the DSI Board. *Individual inputs are not shown in this screen.*
 - 'online' = an Input Module is detected and is configured in System Galaxy for the Module number shown. The Module number is the Input Board's binary ID that was configured in **Step 8** of this document).
 - 'off-line / not defined' = either the system did not detect a module – OR – the module has not been configured into the *Serial Channel programming* screen (see **Step-13** of this document).



List of Modules connected to DSI#4 Section-2 located in Controller#1 of Cluster#2

NOTE: The screen below shows that there are **8 Modules** on Section 2 of the DSI Board. *The numbers 1-8 are the Board IDs of each Input Module, not the individual inputs.*

NOTE: To see the status of individual inputs, you can use the Device Status screen (View > Device Status).